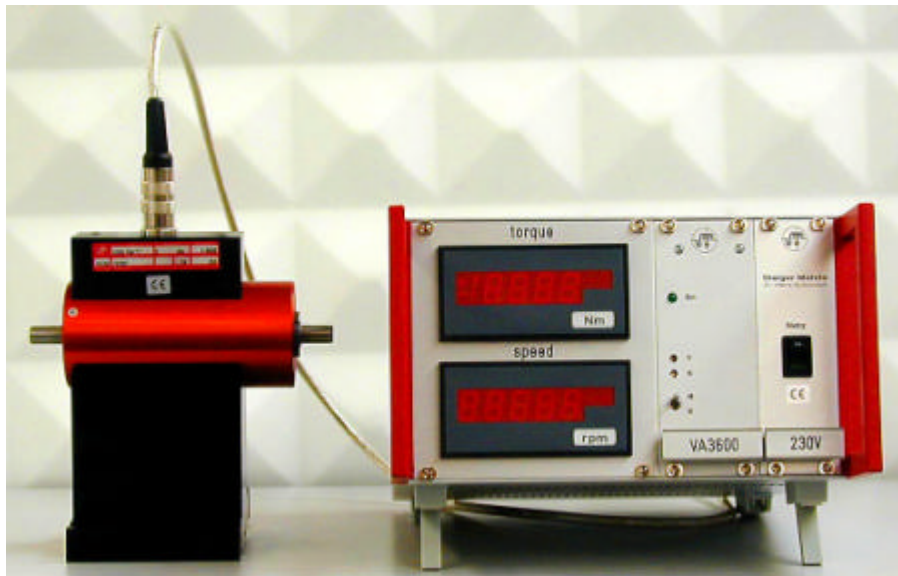




Supply and Evaluation System for Torque Transducer Type 0160 DM, 0125 DF, 0411 IE, 0170 MS



1. Special features

- Accurate correction to zero point and gain deviation
- Low-pass filter
- Display for torque and speed with correct measuring size
- Electrical calibration function
- Portable housing with prop-up handle, optionally other cabinet widths
- All connections are pluggable and can be accessed at the rear of the case
- Optionally: RS 232 C - interface

2. Application

The supply and evaluation system for torque sensors type 0160 DM is ideally suitable for application in operational measurement techniques or for simple laboratory tasks. The measuring sizes for torque and speed are displayed dimensionally.

The torque- and speed signal is available for both sizes as an analog signal, ± 10 V DC for torque and 10 V DC for speed.

3. Description

The device is quickly set up and is easy to operate. All connections are pluggable: Power supply, sensor connection, analog and control outputs, additional interfaces may be ordered as an option.

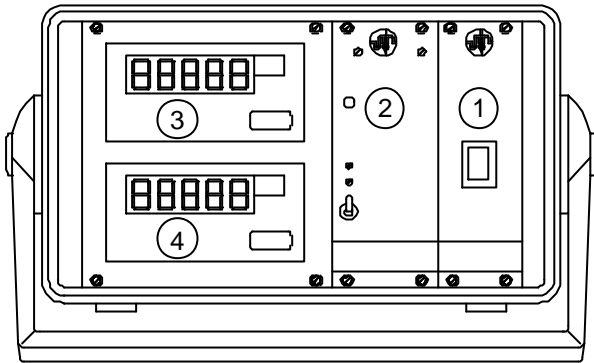
01.01

Supply and Evaluation System for
Torque Transducers

4900/02

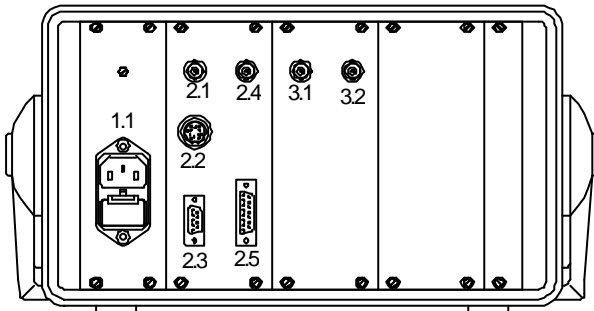
4. Views, Description of Positions

Front view



- 1 Power switch
- 2 VA 3600
- 3 Torque display
- 4 Speed display

Back view



- 1.1 Power supply 115 / 230 V AC
- 2.1 Torque voltage output ± 10 V
- 2.2 Torque sensor
- 2.3 Control line for torque
- 2.4 Torque current output 0 / 4 – 20 mA
- 2.5 Speed pulse output
- 3.1 Speed voltage output + 10 V
- 3.2 Speed current output 0/4-20 mA

5. Technical Data

General:

Power supply:	115 / 230 V ± 10 % 50 – 60 Hz, appr. 20 VA
Ambient temperature range:	+ 15 ... + 55 °C
Dimensions in mm (W x H x D):	255 x 149 x 269
Weight:	4,7 kg
Cabinet:	Table case, series 84
Color:	Ral 7038, agate grey

Electrical specifications:

Analog outputs:	technical data see data sheet 4160
Low-pass filter:	limit frequency 5 Hz (standard), bessel characteristic
Displays:	
Display range:	± 19999 (4 ½ - stellig)
Errors:	$\pm 0,05$ % of the display ± 1 Digit (+ sensor error)
Numbers:	LED, 15 mm high
	Analog output speed
	Indication of min./max. torque
Control outputs:	electrical calibration signal

Example of order specification for standard:

4900/01 - DM 40001 - 230 - 14035

Data sheet no. Type designation Supply voltage Art.-no.

4900/01 - DM 40002 - 230 - Option RS 232 C (Interface for torque and speed display)

Data sheet no. Type designation Supply voltage