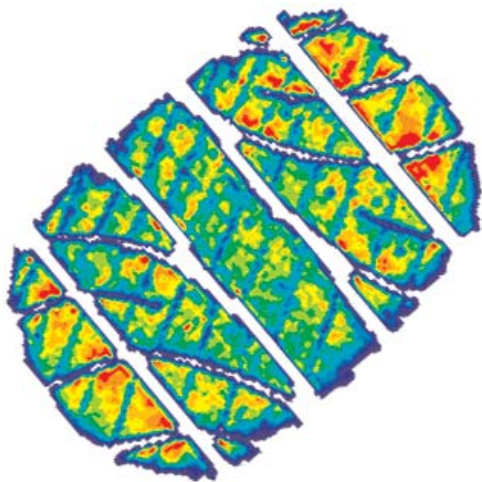


TireScan is the industry's premier tire footprint pressure measurement system. *TireScan* electronically measures static and dynamic tire footprint pressure distribution patterns for passenger, truck, off-road, agricultural, and aircraft tires. The system is simple to set-up and operate; you just need to drive over the sensing mat to take a measurement. *TireScan* includes hardware, software, sensors, and interface electronics. Real-time data is captured, stored, and can be analyzed using a wide range of application specific graphs, imaging analysis tools, and / or exported into other ASCII programs. *TireScan* has been used to evaluate tire designs and tread patterns, conduct quality control measurements, perform competitive benchmarking, and assess vehicle suspension, as well as many other tire related measurements.



*Passenger tire tread
pressure output*

TireScan uses patented, thin-film (0.004 in/0.1 mm) sensing pressure mats with very dense spatial resolution. The mats are dimensionally stable resulting in extremely consistent and repeatable results. Mats are placed between the tire and the ground or surface to be measured; the accompanying data acquisition electronics and software rapidly scan the mats and capture the contact pressure data for analysis. The system enables you to make a dynamic "recording" of a tire as it rolls over the sensor.

Applications:

- Tire footprint pressure pattern evaluation
- Tread design
- Manufacturing quality assurance
- Vehicle suspension analysis
- Competitive benchmarking

Key Features:

- Pressure mapping
- Dynamic recording and playback
- Fast, accurate, and repeatable measurements
- Graphing and analysis capabilities
- Real-time viewing
- Flexible, thin-film sensors
- Sensors are durable and reusable
- High spatial resolution
- Pressure range 0-300 PSI
- Sample rate up to 831,000 sensels/sec
- 8-bit pressure resolution
- Portable
- System optimized for the application
- Quality engineering support

Found in:

Research & Development, Quality Assurance, Test Facilities, and Manufacturing

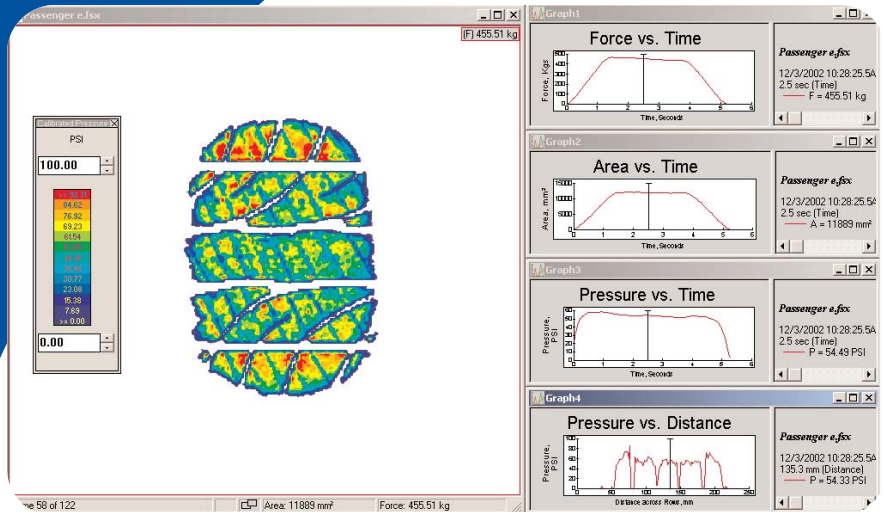
Industries:

Tire Manufacturers
Vehicle, Wheel and Suspension Manufacturers
Transportation Regulatory Agencies

Specifications and Features

Software Features:

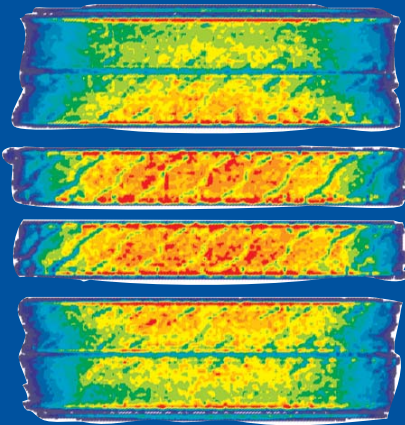
- Capture dynamic force, pressure, and contact area data
- Record data as “movies”
- Play-back pressure “movies”
- Display real-time and recorded data as 2-D and 3-D images
- Plot pressure, area, and force data over time and distance
- Export ASCII file capability
- Ability to isolate and analyze specific areas
- View and compare multiple tests simultaneously
- And much, much more!



Software Display

Dynamic tire footprint pressure output and graphs showing many aspects of pressure data

Truck Tread



TireScan's Sensor Options

Sensor Model #	Tire Type	No. of Sensing Elements	Spatial Density (Measured in sensels/ unit ²)	Spatial Resolution	Sensing Area
8050	Passenger & Truck	33,792	277.8/in ² 43.1/cm ²	0.06 x 0.06 in 1.5 x 1.5 mm	11.6 x 10.6 in 294 x 270 mm
8000Q	Large Truck	33,792	69/in ² 10.8/cm ²	0.120 x 0.120 in 3.0 x 3.0 mm	24.4 x 22 in 618 x 558 mm
7100Q	Off-Road	33,408	25/in ² 3.9/cm ²	0.2 x 0.2 in 5.0 x 5.0 mm	39.6 x 36 in 1004 x 914 mm

Tekscan, Inc.
307 West First Street
South Boston, MA 02127-1309 USA
tel: 617.464.4500/800.248.3669
fax: 617.464.4266
e-mail: marketing@tekscan.com
website: www.tekscan.com

RevA_040604

Call Today for a Demonstration!

