

WS Position Sensors Options / Accessories



Automation
Sensors
Measurement

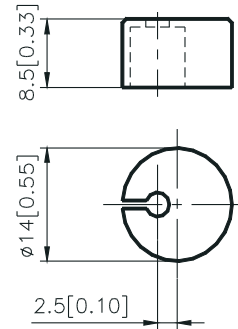
1

Options

Please Note: Options can only be ordered with the sensor, not separately.

Cable Dust Wiper: SAB2

The SAB2 cable dust wiper avoids the penetration of troublesome particles and media through the cable outlet by using an elastomeric seal. The sensor is protected against non abrasive particles and thin liquids. SAB2 is not useable with abrasive dust and thick liquids. With SAB2 the height of the cable outlet will be raised by 9 mm max. (for guaranteed dimensions consult factory).



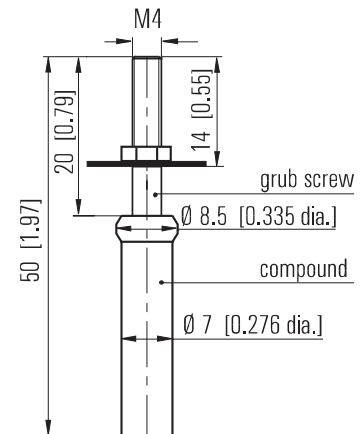
Dimensions in brackets are inches.

Standard Cable Fixing: M4

The M4 Connection is standard for the WS sensor families WS17 and WS/LR19. All other WS sensor families (with the cable clip fixing as standard) can also be fitted with the M4 connection if necessary.

The M4 connection consists of a M4 grub screw with locknut, a mounting aid and a compound sleeve. Connection to the moving part of the machine or system is made with a through hole and a M4 nut.

NOTE: Do not screw the M4 connection itself into a stationary object, otherwise the measuring cable will be twisted!



Order Example for Options: WS12-2500-10V-L10-SAB2

Accessories

Cable Guide Wheel: SR1

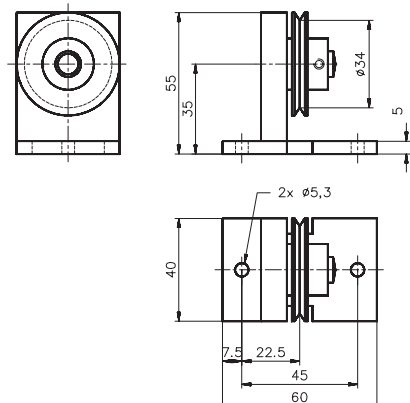
The cable guide wheel SR1 is necessary for installation situations where straight-line motion of the sensor cable is not possible or where the sensor must be located outside of the motion area due to limited space.

Turn Angle: 0 to 180°

Order Code: **SR1**

NOTE: The use of pulley wheels will reduce the lifecycle of the cable!

Dimensions in brackets are inches.



WS Position Sensors Accessories



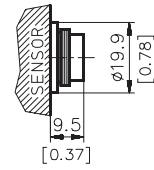
Automation
Sensors
Measurement

1

**Connectors for
WS Position Sensors**
8 pins

Male Socket
Order Code:

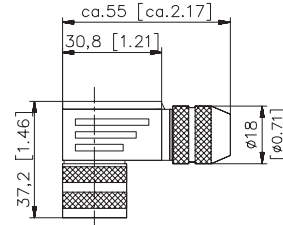
WS-SOCKET-D8



Compatible Female Connector with angled
outlet IP67
Order Code:

WS-CONN-D8

Suitable for cable diameters from 6 to 8 mm



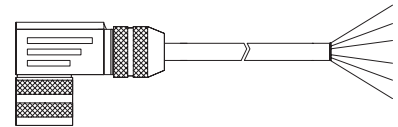
**Connector Cables for
WS Position Sensors**
8 pins

The 8-core screened cable is supplied with a
mating 8-pin DIN connector at one end and 8
wires at the other end. Standard lengths are
3, 10 and 15 m. Other cable lengths are
available on request.

Order Code:

WS-KABEL - **M** - **LITZE** - **D8**

Cable length in m



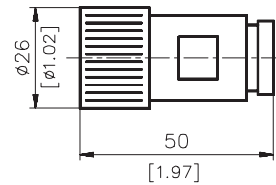
Wiring	Connector Pin / Colour							
	1	2	3	4	5	6	7	8
	white	brown	green	yellow	grey	pink	blue	red

**Connectors for
WS Position Sensors**
12 pins

Female connector

Order Code:

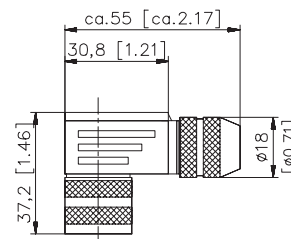
WS11-CONN-12P



**Connectors for
WS Position Sensors**
12 pins

Female DIN connector with angled outlet
Order code:

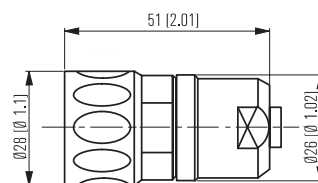
WS-CONN-D12



**Connectors for
WS Position Sensors**
17 pins

Female connector
Order code:

WS-CONN-017S-M



WS Position Sensors Accessories



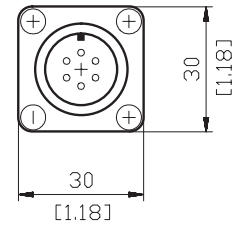
Automation
Sensors
Measurement

1

Connectors for WS Position Sensors 6 pins

Male Socket
Order Code:

WS-CONN-026P

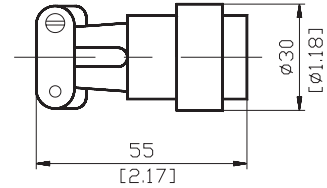


Female Cable Connector
Order Code:

WS-CONN-066S

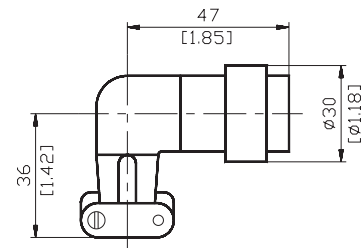
Male Cable Connector
Order Code:

WS-CONN-066P



Female Connector with angled outlet
Order Code:

WS-CONN-086S



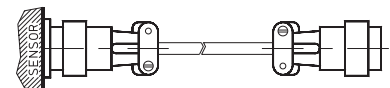
Dimensions in brackets are inches.

Connector Cables for WS Position Sensors 6 pins

Both ends of the cable are supplied with the mating connector WS-CONN-066S. Standard lengths are 3, 10 and 15 m. Other lengths are available on request.
Order Code:

WS-KABEL — **M** — **STECKER**

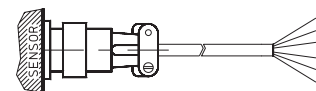
Cable length in m



The cable is supplied with the mating connector WS-CONN-066S at one end and 6 wires on the other end. For available lengths see above.
Order Code:

WS-KABEL — **M** — **LITZE**

Cable length in m



Wiring	Connector Pin / Colour					
	A	B	C	D	E	F
	white	brown	green	yellow	grey	pink