

I-SCAN



*PRESSURE
ASSESSMENT SYSTEM*

INSTALLATION MANUAL

MAY 2001

Version 5.0

DECLARATION OF CONFORMITY

The Tekscan *I-Scan* System has been tested and conforms to the following standards for a 'Component Medical Device - Tactile Sensor System':

US

UL 544

Europe

EN-60601-1, EN55011, IEC601-1-2, IEC801-2, IEC801-3, IEC801-4, IEC801-5

TYPE BF EQUIPMENT



Type BF Equipment is type B equipment with an F type applied part.

Type B equipment

Equipment which provides a particular degree of protection against electric shock, particularly regarding the allowable leakage current and the reliability of the protective earth connection.

F-type isolated (floating) applied part

An applied part isolated from all other parts of the equipment to such a degree that the patient leakage current allowable in a single fault condition is not exceeded when a voltage equal to 1.1 times the highest rated main voltage is applied between the applied part and the earth.



GETTING ASSISTANCE

Contact Tekscan for additional *I-Scan* sensors. Tekscan, Inc. will provide technical assistance for any difficulties you may experience using your Tekscan system. Call or e-mail us with any concerns or questions. Our knowledgeable support staff will be happy to help you. Tekscan provides 90 days of free Technical Support from the system shipping date. After 90 days, Tekscan offers annual Technical Support and System Maintenance Plans or customer support at our standard rates per incident. An incident is defined as one single issue or problem.

Technical support is available Monday through Friday 8:00 AM to 7:00 PM EST except on holidays, via our toll-free number, international number, or via email.

Tekscan, Inc.
307 West First Street
South Boston, MA 02127-1342

Phone:
Toll Free in U.S. and Canada
(800) 248-3669
or

International Number
(617) 464-4500

Fax: (617) 464-4266

E-mail: support@tekscan.com

or visit our website at:
www.tekscan.com

*****This manual should only be used with software versions number 5.0 and higher.***

Copyright © 2000 by Tekscan, Incorporated. All rights reserved. No part of this publication may be reproduced, transmitted, transcribed, stored in a retrieval system, or translated into any language or computer language, in any form or by any means without the prior written permission of Tekscan, Inc., 307 West First Street, South Boston, MA 02127-1342.

Tekscan, Inc. makes no representation or warranties with respect to this manual. Further, Tekscan, Inc. reserves the right to make changes in the specifications of the product described within this manual at any time without notice and without obligation to notify any person of such revision or changes.

I-Scan is a registered trademark of Tekscan, Inc.

Microsoft Windows and *MS-DOS* are registered trademarks of Microsoft Corporation.

INSTALLATION

This guide shows you how to install the *I-Scan* software and hardware, and also provides the system requirements necessary to support the *I-Scan* Pressure Assessment system.

System Requirements

The *I-Scan* system can be added to most IBM-compatible personal computers. To function properly, your computer system must have the following minimum requirements:

I-Scan Minimum Requirements

- Pentium 133 MHz
- 64 MB RAM
- 30 MB available hard drive space
- CD ROM drive
- Dedicated parallel port/ PCI Expansion Slot
- Windows 95 OSR2/98/ME or NT4

I-Scan Suggested Requirements

- Pentium 300 MHz
- 64 MB RAM
- 30 MB available hard drive space
- CD ROM drive
- Dedicated parallel port/ PCI Expansion Slot
- Windows 95 OSR2/98/ME or NT4

I-Scan Requirements for Optional Video Feature

- Pentium 600MHz
- 128 MB RAM
- 40 MB available hard drive space
- CD ROM drive
- Dedicated parallel port/ PCI Expansion Slot
- Windows 95 OSR2/98/ME or NT4

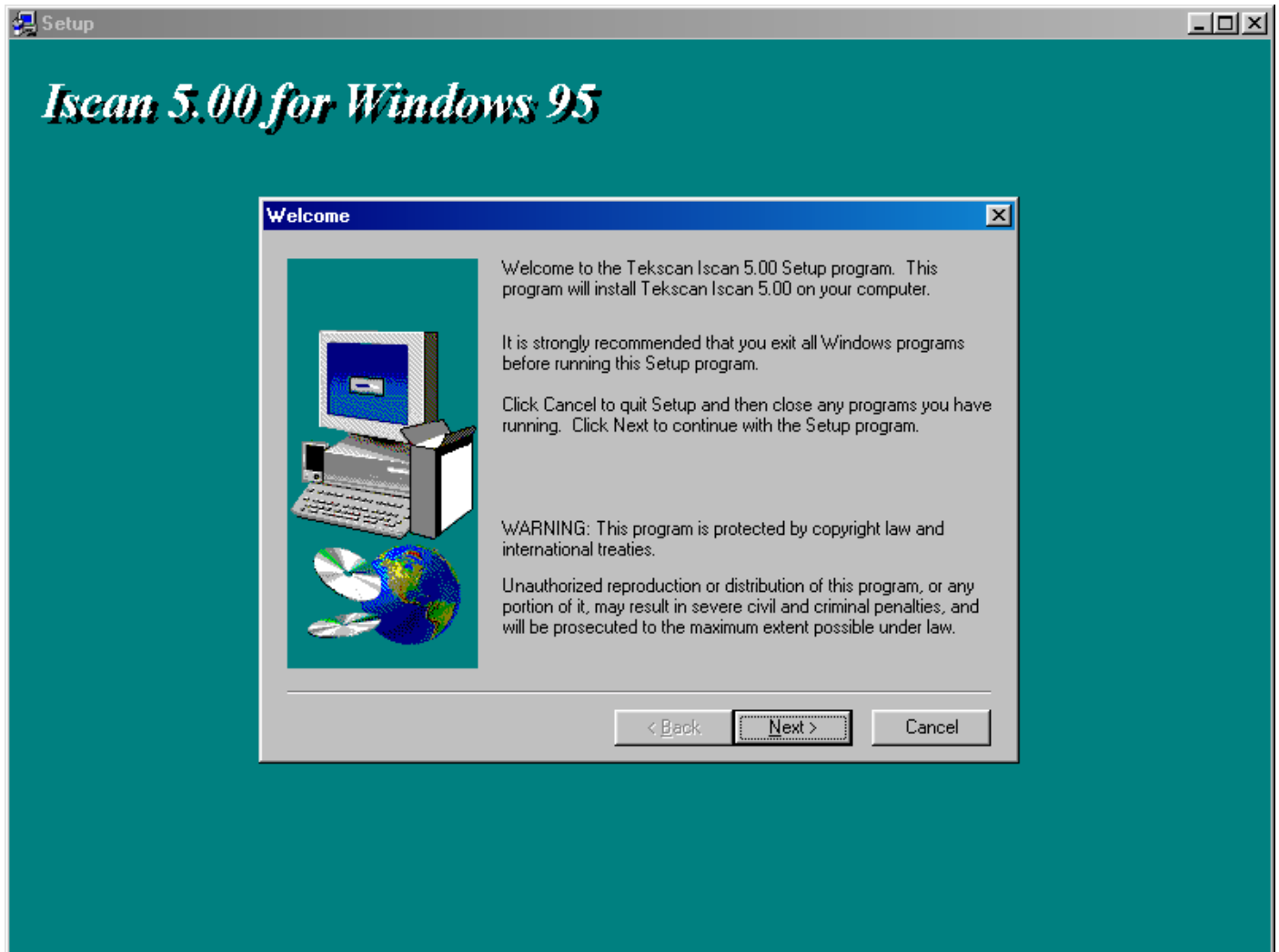
Software Installation

Before installing *I-Scan*, close all other applications. If you have an older version of *I-Scan*, you must first uninstall it, or install *I-Scan* 5.0 into a separate directory.

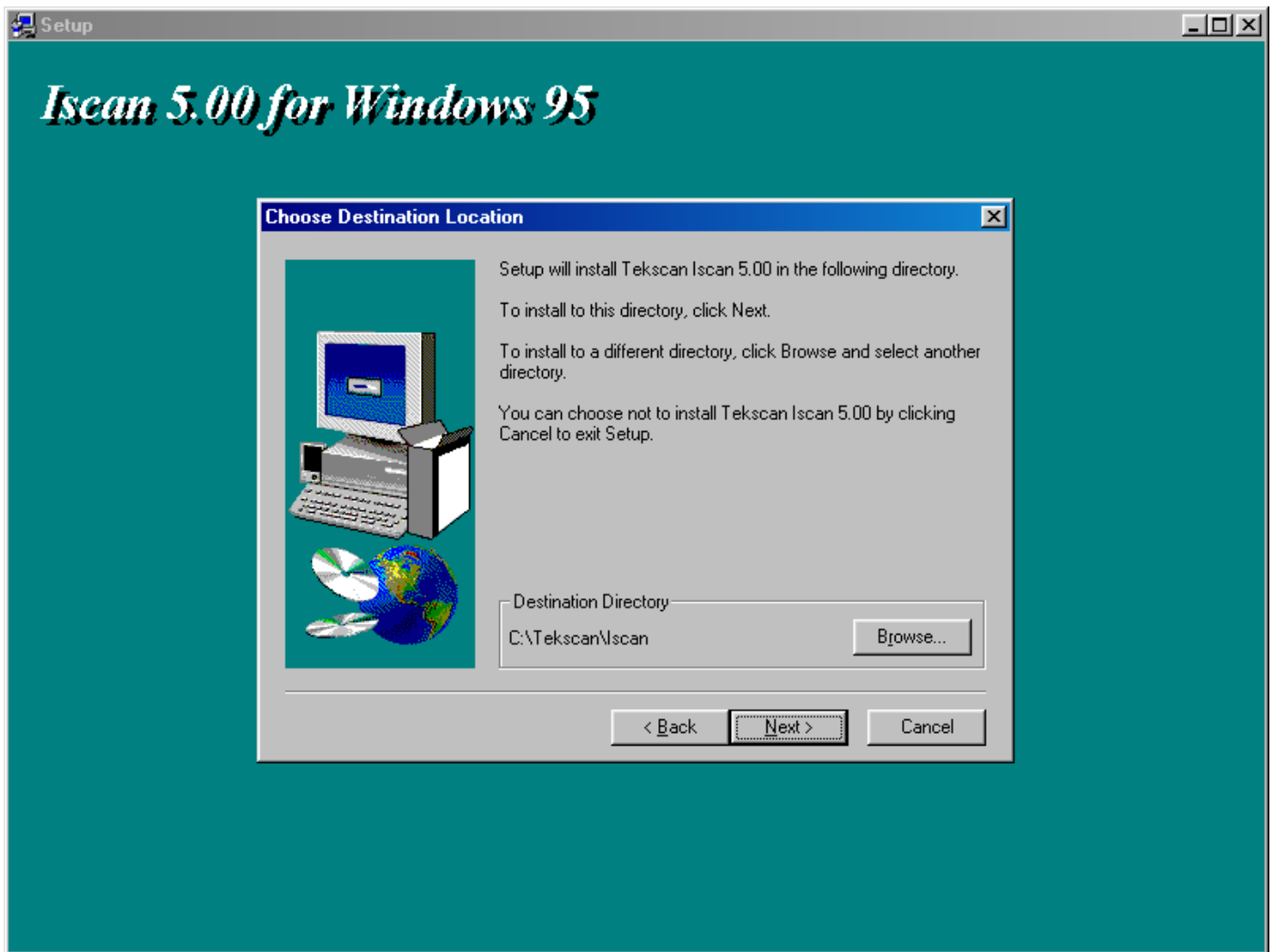
To install the software on Windows 95™/98™/NT™, place the *I-Scan* CD in your CD-ROM drive. If the installation menu does not open automatically, click on **Start** at the bottom left of the screen, then click on **Run**. If you put the CD in your d:\ drive, type d:\IScanAutorun.exe in the Command Line field of the Run dialog box. This will open the *I-Scan* Installation Menu (below).



Click on the 'Install *I-Scan*' button. The installation program will begin the installation by bringing up the Welcome Screen (below). Click *Next*.

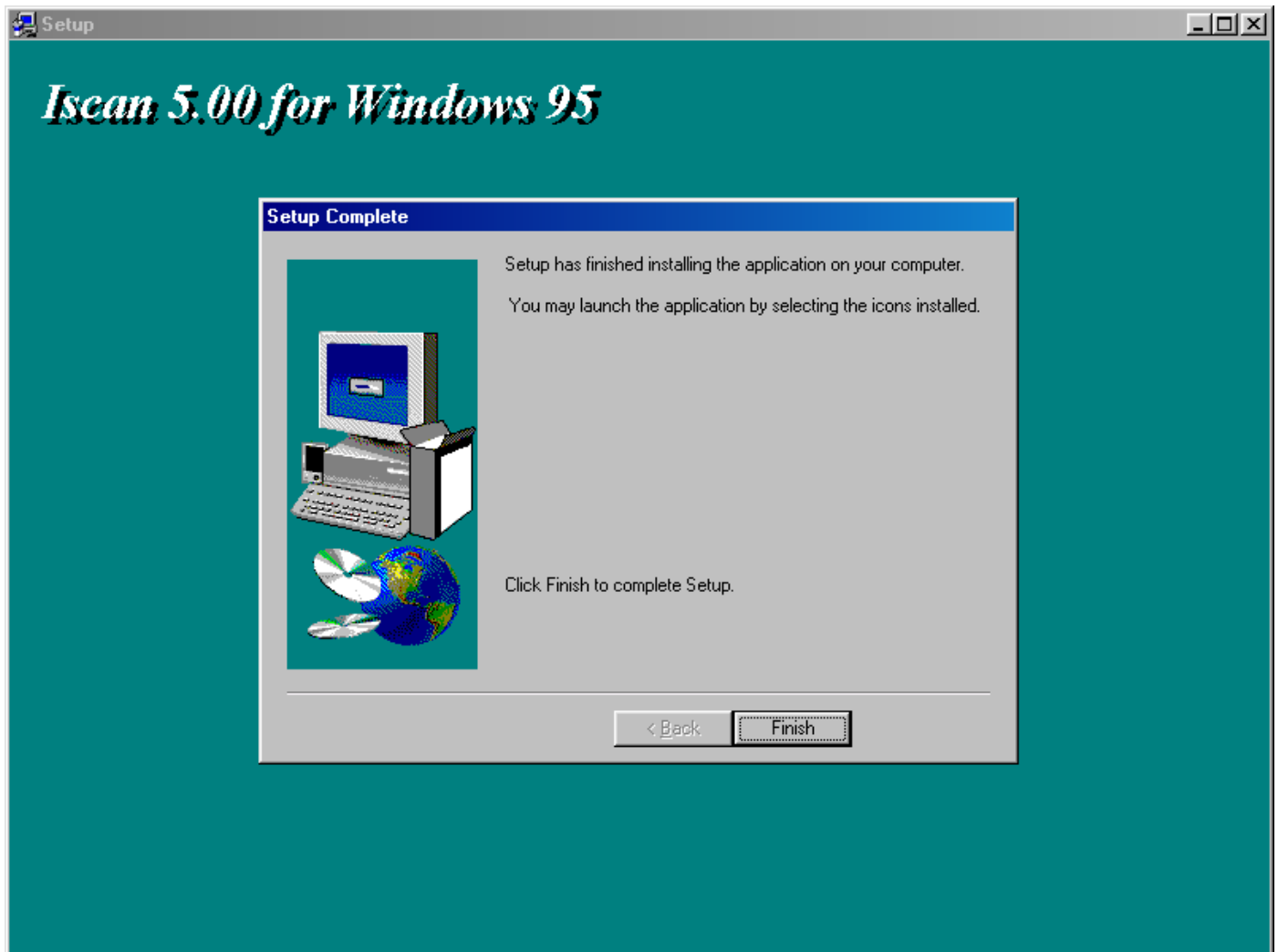


This will bring you to the Choose Destination Screen (following). The Choose Destination Screen allows you to select the directory in which *I-Scan* will be installed. The default location is c:\Tekscan\IScan. If you wish install the software to a different location, click **Browse** to select the directory.



When you have finished, click *Next*. This will bring you to the Finish Screen (following).

The installation is now complete. *I-Scan* will place a short cut on your desktop. For all of the changes to take effect, you must re-start your computer. To re-start your computer, click *Finish*. Your computer will re-start. The application can now be run by double clicking the short cut on your desktop, or by clicking the **Start** button at the bottom left of the screen, selecting **Programs**, then clicking the *I-Scan* icon.



To install *I-Scan* on a network:

An additional licensing fee is associated with running *I-Scan* on multiple computers linked to a network. Please contact Tekscan, Inc. for more information at (800) 248-3669 or via e-mail at marketing@tekscan.com.

Hardware Installation

I-Scan has two possible hardware configurations: a *PC Interface Board (SR-2)*, and a *Parallel Interface*. The installation of the two configurations is described below.

PC Interface Board (SR-2)

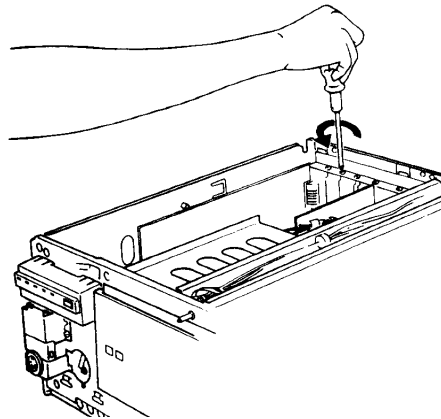
The *PC Interface Board* is a data acquisition card that uses a 16-bit ISA expansion slot of your computer. Refer to the manual supplied with your computer for any specific details on installing a board in your computer's expansion slot.

Warnings:

1. Unplug your computer before beginning installation.
2. Touch the metal plating on the computer to ground yourself prior to handling the interface board, to reduce the chance of static discharge.
3. Never force the interface board into a computer slot, and be careful not to twist or bend the board.

To install your *I-Scan* interface board into a typical computer:

1. Disconnect power and remove the cover from your computer.
2. Remove the slot-cover plate from the available expansion slot.
3. **Carefully** insert the *I-Scan* interface board into the slot. *Make sure to touch a metal object before handling the interface board.*
4. Fasten the interface board firmly to the computer using the screw from the slot-cover plate.
5. Test the system thoroughly to ensure it works correctly, before replacing the computer cover. Reinstall the computer cover.
6. Plug the *I-Scan* handle cable into the receptacle on the *I-Scan* interface board. The receptacle should be unobstructed and accessible at the back of your computer.
7. Plug your computer back in and turn the power on.



Parallel Interface

The *Parallel Interface* includes a power supply adapter, a parallel interface module (adapter box), a parallel extension cable, and a sensor handle. The parallel interface module is designed to share the printer port of your computer with the *I-Scan* system, so you can run your printer and the *I-Scan* system without swapping cables.

CAUTION! *Use only the power adapter provided by Tekscan, to avoid damage to the system.*

1. Connect one end of the parallel extension cable to the computer's parallel (printer) port.
2. Connect the other end of the parallel extension cable to the parallel interface module port labeled 'To Computer's Parallel Port'.
3. Connect the printer cable between the printer and the parallel interface module port labeled 'To Printer's Parallel Port'.
4. Plug the power adapter cable into the parallel interface module connector, which is located between the two parallel port connectors and labeled 'Power In'.

Note: *The power supply for the Parallel interface is 5 V DC.*

5. Connect the sensor handle's cable to the connector on the opposite side of the parallel interface module; it is located to the left of the power light and labeled 'Scanning Handle'. Once installation has been completed, your system should look like the two figures following.

Note: *Once installation is complete, make sure that you are able to open a Real-time window, the printer works correctly, and that the power indicator (green) on the Parallel interface module is on. If any of these does not function properly, check all connections.*

