

Distance Sensor M1

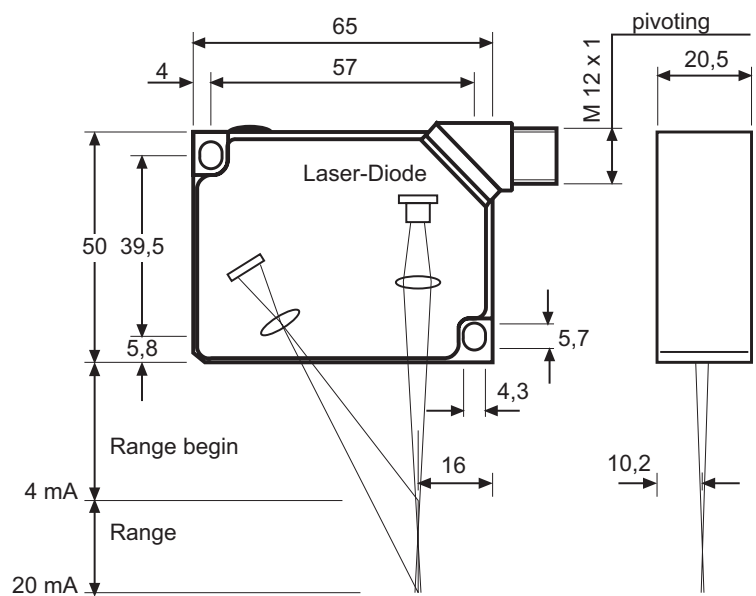
- Measuring
- Controlling
- Monitoring

Low cost
Distance measuring with Laser
100 values / s
Triangulation analog



Sensor head M1 /20 /100 /200 /400

Weight 100 g



- independent from object surface
- no additional electronic module

Laser Sensor M1

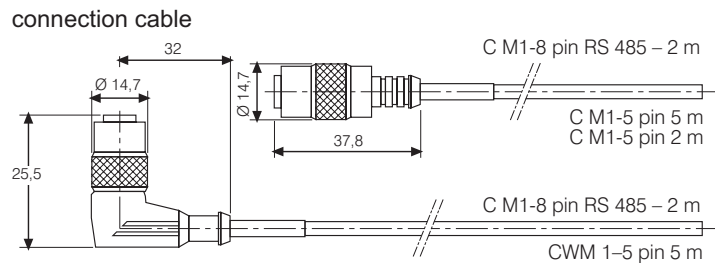
Sensor	M1L/ 20	M1L/ 100	M1L/ 200	M1L/ 400
Range [mm]	20	100	200	400
Range begin [mm]	30	30	50	100
Linearity* ± [mm]	0,1	0,2	0,9	1,5
Resolution* [mm]	0,1	0,3	0,4	0,6
Light spot diameter [mm]	1	2	2	3

Light source	Laser, 670 nm, red visible
Laser protection class	2
Distance output	4 ... 20 mA / 0 ... 10 V, optional RS 485
Reaction time	10 ms
Bandwith	100 Hz
Temperature drift	0,04% of range / K
Not enough light	PNP 100 mA
Ambient light	10.000 Lux
Operation time	50.000 h for Laser diode
Operation temperature	0° ... +50°C
Storage temperature	-20° ... +70°C
Humidity	< 90% RH
Protection class	IP 67
Supply	12 ... 28 VDC < 150 mA

* Measurement on object color white

Delivery:
Sensor without connection cable
and without connector

Please order cable and connector
as accessories



pin assignment

